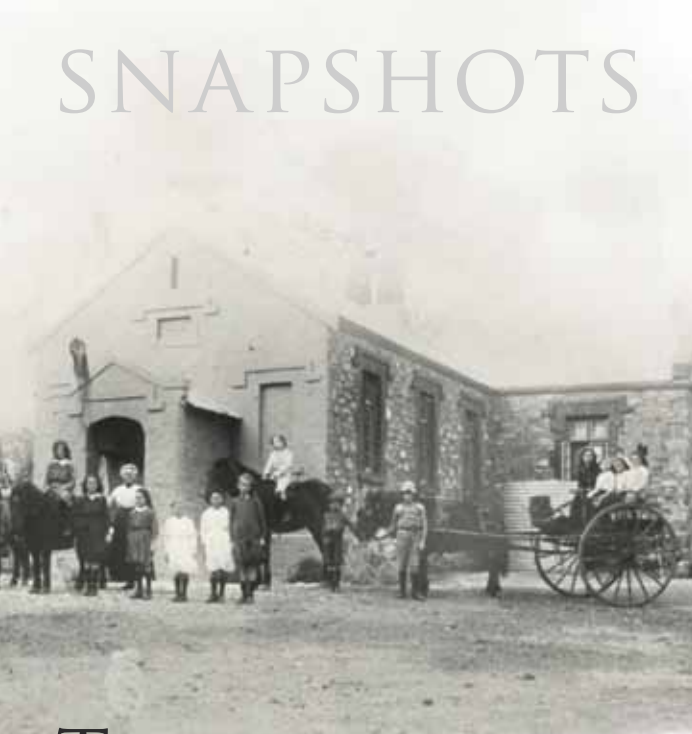
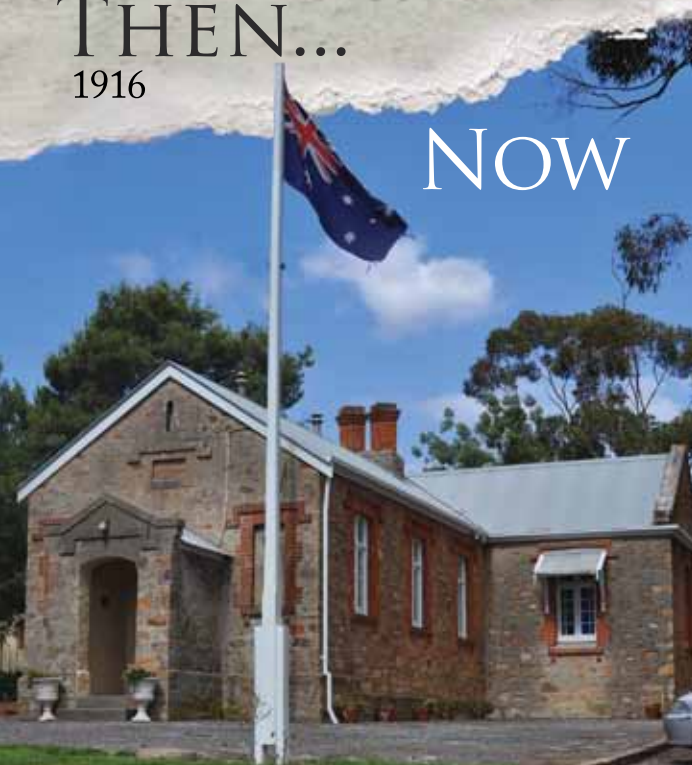


SNAPSHOTS



THEN...
1916

NOW



Opening times:

Sunday 1.00- 4.00pm
Closed Easter & Christmas

Admission: gold coin entry

Car & bus parking facilities available

For bookings contact:

Uleybury School Museum

Ph: (08) 8280 7396

City of Playford Library Service

Phone: (08) 8256 0334 Fax: (08) 8256 0381

Email: library@playford.sa.gov.au

www.playford.sa.gov.au/uleyburyschool

ULEYBURY SCHOOL MUSEUM



CITY OF

Playford



Cornishmans Hill Road
One Tree Hill, South Australia

Uleybury School Museum History

The Uleybury school was built in 1856 and owes its beginnings to Moses Bendle Garlick, a Baptist, layman, weaver and soldier in the Napoleonic Wars.

Garlick approached the Central Board of Education in 1854 requesting assistance with construction of a school. In February 1855 the Board of Education provided £150 on the proviso that the local community contributed the same amount. This offer fell short of expectations of the locals as the cost of building the school was estimated to be £400. Local Parson Reverend J.P Buttfield donated a parcel of land on which the school was built.

Building of the school and teacher's residence was completed in 1856 with the first teacher at the school being John Mattingly. Mattingly oversaw 18 boys and 16 girls. The school was conducted much like a church school until 1874 when it came under jurisdiction of the Government.

When nearby Lady Alice Mines school and Precolumb School closed the students were transferred to Uleybury School.



Students at Uleybury School c.1916



What's in a name?

The name 'Uleybury' was so coined by Moses Bendle Garlick who found that the hills district reminded him of his native Cotsworld. 'Uley' was the name of his home village and 'bury' is a Gloucestershire term for tree covered plateau.

The school was renamed One Tree Hill Rural School in 1943 and changed again in 1946 to the One Tree Hill Primary School. The name 'Uleybury' was dropped over apparent confusion between Unley School.

Over the years transportable buildings and other structures were added to the site. The school remained open until 1971 and was the oldest school building still in use by the Education Department.

Special Education Activities

Uleybury School Museum provides the unique opportunity to step back in time and experience schooling as it was for children.

Restoration of the old school building was undertaken in 1978 and in 1979 the building reopened as a museum.

The original school room is furnished and includes information, photographs and memorabilia of the school.

Come to Uleybury School Museum and experience and 'old time' lesson taught by museum caretaker. There are no computers in this classroom! Children will use inkwells and slates... and beware bad behaviour!

Class and group bookings made by appointment.



40
x 9