



Access and Social Inclusion Advisory Group

Terms of Reference



City of Playford



Easy English



This is about the rules for Council's Access and Social Inclusion Advisory Group.

We will call it **the Group**.

We call the rules of the Group the Terms of Reference

Terms of Reference say

- what the Group will do
- who will be in the Group
- how people in the group will act



### **Who will be in the Group**

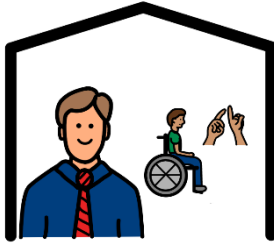
Council want people in the Group like

- people with disability



- carers





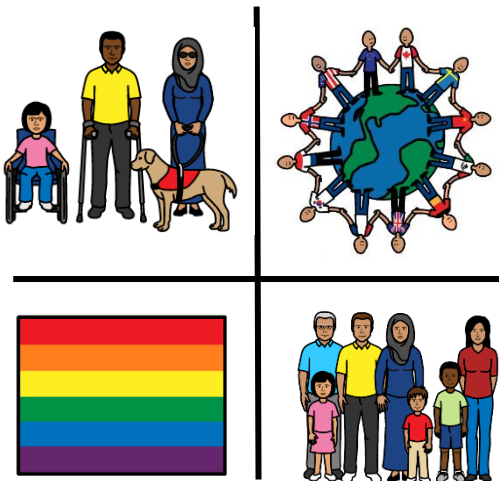
- disability support providers



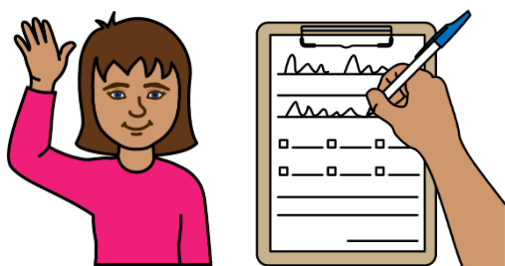
- council staff who know a lot about disability
- elected members

Council want people in the group from different backgrounds.

Like



- born in a different Country
- different disabilities
- Aboriginal and Torres Strait Islander
- age
- gender
- sexuality



People who want to join fill out the 'I want to be in the group' form.

### What the Group will do

The group will tell Council what people with disability think is important in the community.



The community is where you live, work or play.



This group will tell Council

- new ideas to try
- what works well
- what does not work well

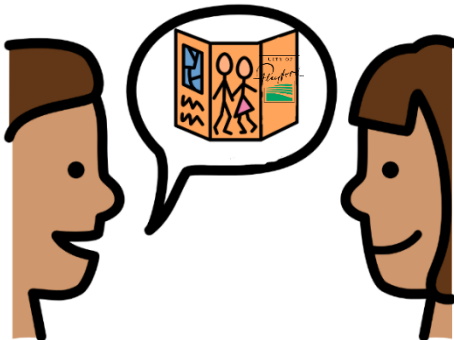
This group will



- help people with disability have a say

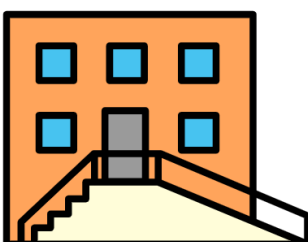


- make sure Council include people with disability in plans and projects



- tell people what Council does

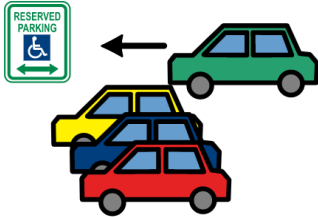
- help Council with ideas about things the community use  
Like



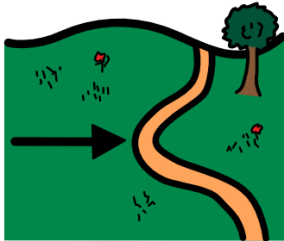
- buildings



- playgrounds



- car parks



- footpaths

## What Members should do

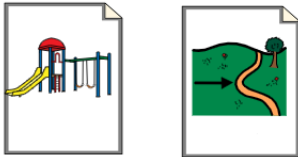


Members should

- respect what other people say



- want to give ideas

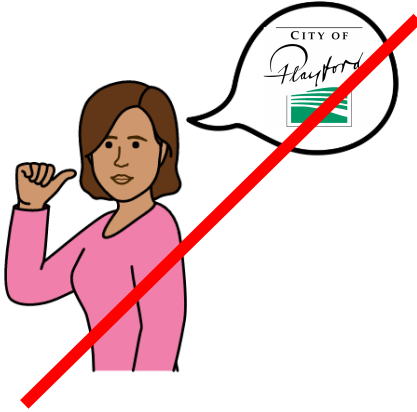


- choose projects you want to be part of

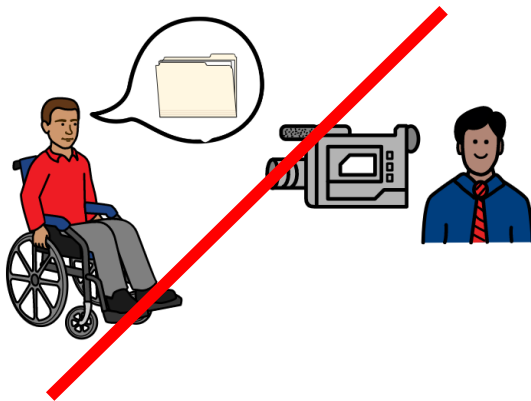


#### **What members can not do**

- spend Council money



- say you are from the Council



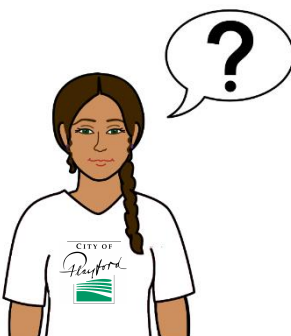
- talk to the media



### What Council will do

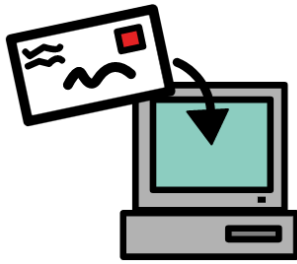
Council will

- share information about what Council are doing



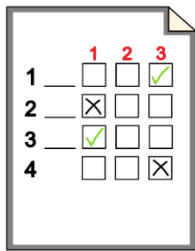
- ask for ideas on projects





This might be by

- email



- survey



- meetings

### Check Terms of Reference



Council check the Terms of Reference to see if they are still okay

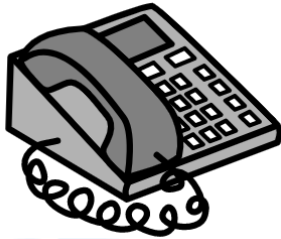


Members can tell Council what they like and do not like about the Group

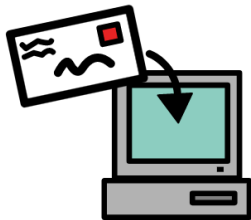


More information

Ask Councils Disability Inclusion staff



**Phone** 8256 0224



**Email** [agodfrey@playford.sa.gov.au](mailto:agodfrey@playford.sa.gov.au)



**Come** Playford Civic Centre

10 Playford Blvd, Elizabeth