



# Get outside and **explore Playford**



The City of Playford is blessed with an abundance of open spaces — and you don't need to go far to experience the best that our city has to offer. This is your guide to getting outside in Playford.





Fremont Park

# There's so much for you to explore

Open spaces provide places for people to gather, socialise, be active and to connect with nature. Whether you are looking for somewhere for a family picnic, a cool new playground for the kids to explore (we have more than 100 of them!) or just somewhere to relax and appreciate nature, we have an abundance of open spaces for you to experience.

As the City of Playford continues to invest in open spaces, we will see an increase in our tree canopy, and improvements to playgrounds, reserves and sporting facilities.

Although it was tough to narrow it down to just a few, we've managed to pick some of our top places for you to visit.

**Get out and explore Playford!**

## 1 Fremont Park

Corner of Yorketown Road & Main North Road, Elizabeth Park



Fremont Park is arguably one of the city's most beautiful and diverse recreation spots.

Centrally located near the Elizabeth City Centre, this picturesque park features a lake (home to ducks and other waterbirds), two playgrounds, including all-abilities play equipment, basketball court, an outdoor exercise gym, and plenty of shady green spaces.

Excitingly, the park is still improving, with a dog park, 5600 shrubs, 250 trees, a public toilet, paths and lighting to be installed.

## 2 Stebonheath Park and Dog Park

Davoren Road, Andrews Farm



Boasting 3.6 hectares of wetlands, boardwalks and bridges – this park has large open spaces, sheltered barbecue areas, a dog park and a huge playground with swings, climbing tower and play equipment for toddlers.

Connecting to the park is the Smith Creek walking trail. Meet here each Saturday morning at 8 am for Parkrun. It's a great way to improve your fitness.



Para Wirra Conservation Park

## 3 Para Wirra Conservation Park

Para Wirra Drive, Yattalunga



Explore the nature play forest and meet the locals - emus, kangaroos, lizards and echidnas, which all wander through the park.

Para Wirra Conservation Park is a protected National Park, with modern facilities in a natural

bushland setting. It includes the Lake Picnic Area, the Knob Lookout, Wirra Campgrounds and the Gawler View Playground. The park has beautiful and challenging walking/hiking trails like the Devil's Nose Track and the Lizard Rock Hike. If bird watching is your thing, you won't be disappointed with colourful scarlet robins, blue wrens and eastern spine bills which visit the park.



Stebonheath Park and Dog Park



# Connecting with nature in Playford

## Virginia Grove Play Park

Coratina Rd, Virginia

## Eyre Sports Park

Womma Road, Eyre

## Central Park Miravale

Saveiro Boulevard, Angle Vale

## Stebonheath Park and Dog Park

Davoren Road, Andrews Farm

## Playford Alive Town Park

Peachey Road, Munno Para

## Para Wirra Conservation Park

Para Wirra Drive, Yattalunga

## Stuart O'Grady Bikeway

Follows the Northern Expressway from Port Wakefield Road, near Virginia to Gawler

## Fremont Park

Corner of Yorketown Road and Main North Road, Elizabeth Park

## Jo Gapper Activity Park

Blackburn Road, Hillbank

## Little Para Seed Orchard

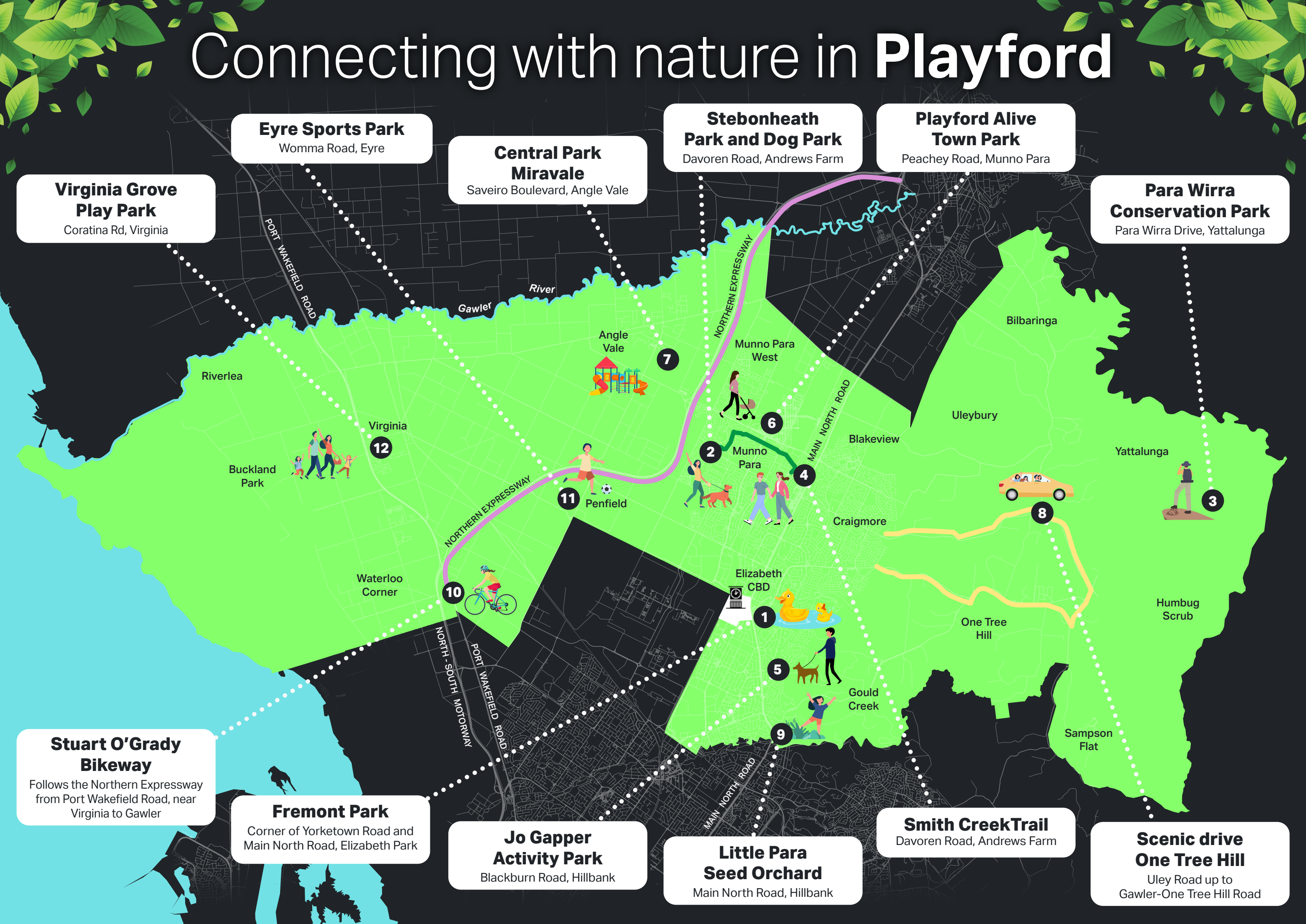
Main North Road, Hillbank

## Smith Creek Trail

Davoren Road, Andrews Farm

## Scenic drive One Tree Hill

Uley Road up to Gawler-One Tree Hill Road







Waterplay at Playford Alive Town Park

## 4 Smith Creek Trail

**Davoren Road, Andrews Farm**



The Smith Creek Trail is a family-friendly path that winds its way from Smithfield Plains to Stebonheath Park at Andrews Farm. The three kilometre trail is perfect for walking, scooting or cycling. Way-finding maps are located at either end of the trail, with artwork and other points of interest along the way.

## 5 Jo Gapper Activity Park

**Blackburn Road, Hillbank**



Jo Gapper Activity Park is one of the jewels in the crown of Playford's parks. The park features a playground, football oval, basketball and tennis courts, walking trail and lookout, and a dog park with lighting.

## 6 Playford Alive Town Park

**Peachey Road, Munno Para**



Nestled behind our business hub, the Stretton Centre and the Playford Library, you will find the Town Park. Bring your bike, board or scooter and ride the skate bowl, enjoy the water play area in the warmer months, have a picnic on the lawns, play on the two playgrounds or shoot some hoops on the basketball key.

There's a huge rope climbing pyramid, two slides, swings, flying fox, a climbing wall plus barbecue facilities and sheltered picnic tables.

The waterplay is active every day, 10am to 7pm during daylight saving from October to April. There are public toilets, free wi-fi and bike racks.

## 7 Central Park Miravale

**Saveiro Bvd, Angle Vale**



Slam-dunk on the basketball hoop or squeeze in a workout on the fitness equipment.

There's also a pump track and a playground with an undercover tube slide, tower, rock climbing wall and nature play.

The park is close to the local Drakes supermarket, Angle Vale Tavern, Sneaky's Restaurant and Virgara Wines, so it's great spot for a day trip.

## 8 Scenic drive through One Tree Hill

**Uley Road up to Gawler-One Tree Hill Road**



While meandering through the hills, you can take in the stunning views across our city and beyond. These are best viewed at sunset or the "golden hour".

Impress your companions – or even a date – with a well-deserved glass of vino at one of two local wineries, Uleybury Wines and Tenafeate Creek Winery – which have superb views of rolling hills and native bushland.



Central Park Miravale

## 9 Little Para Seed Orchard

**Main North Road, Hillbank**



This public seed orchard has been developed to allow the convenient, safe and rapid collection of high volumes of local-native seeds for regeneration projects with minimal impact on remnant populations. These local plants in turn provide habitat and food sources that attract local native birds, insects and animals.

## 10 Stuart O'Grady Bikeway

**North entrance: Corner of Two Wells Road and Weaver Road, Gawler. South entrance: Port Wakefield Road, Waterloo Corner.**



A shared-use bitumen trail running parallel to the Northern Expressway, which is flat and perfect for cycling or walking short and long distances.

The northern entrance is at the corner of Two Wells Road and Weaver Road, Gawler. The southern entrance is at the end of a cul-de-sac parallel to Port Wakefield Road, Waterloo Corner.



Scenic views from One Tree Hill

Users can connect from the southern end on to the Tapa Marthinthi Yala Shared Use Path for a longer journey, which runs alongside the Northern Expressway.

Highlights along the trail include the former Smithfield Magazines, which date back to the early years of World War Two and were used to store munitions and explosives.

## 11 Eyre Sports Park

**Womma Road, Eyre**



Eyre Sports Park has it all – a nature playground, equipment to climb and quality facilities dedicated to rugby, soccer and cricket. Enjoy the walking trail around the oval.

## 12 Virginia Grove Play Park

**Coratina Road, Virginia**



With places for quiet contemplation, including the sheltered picnic area, there are a number of areas to relax. Then you can cross the bridge to the adjacent reserve, where bright orange fitness equipment spells out "Virginia".

**Share your love of nature with us!**

We would love to see photos of you exploring Playford's parks. Include the hashtag **#ThisIsPlayford** so your photos can feature on the City of Playford's social media pages.

	Walking/ hiking trail		Sports facilities
	Cycling		Playground
	BBQ area		Water play
	Picnic area		Heritage
	Toilets		Scenic views





## Acknowledgement of Country

We acknowledge and pay our respects to the Kaurna people, the traditional custodians whose ancestral lands we gather on.

We acknowledge the deep feelings of attachment and relationship of the Kaurna people to country and we respect and value their past, present and ongoing connections to the land and cultural beliefs.

### Call

8256 0333  
[playford@playford.sa.gov.au](mailto:playford@playford.sa.gov.au)  
[playford.sa.gov.au](http://playford.sa.gov.au)

### Post

12 Bishopstone Road  
Davoren Park SA 5113

### Visit

Playford Civic Centre  
10 Playford Boulevard  
Elizabeth SA 5112

Stretton Centre  
307 Peachey Road  
Munno Para SA 5115