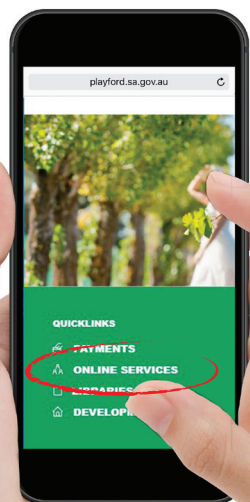


CHECK YOUR PARKING INFRINGEMENT PHOTOS ONLINE

If an expiation has been issued for your vehicle, an authorised officer may have photographed the vehicle at the time the offence was committed.

Should you wish to view any images of the offence you can do so by visiting the **online services** link at playford.sa.gov.au

It may take up to 48hrs for your image to appear on the website after your expiation was issued.



CALL
(08) 8256 0333

VISIT
Playford Civic Centre
10 Playford Boulevard
Elizabeth SA 5112

Stretton Centre
307 Peachey Road
Munno Para SA 5115

POST
12 Bishopstone Road
Davoren Park SA 5113

EMAIL
playford@playford.sa.gov.au

     playford.sa.gov.au



PARKING SAFETY

In the City of Playford

Parking Safety

In the City of Playford

No Stopping – (road rule 167)

You must not stop in a 'No Stopping' zone at any time unless it is only restricted at certain times, e.g. schools may restrict parking during specified times Monday to Friday between 8-9am and 3-4pm only. Times would be added to the sign to indicate the times when stopping is not permitted.

This also applies to: **Mail Zones, Bus Zones and Taxi Zones** where marked.

You must not stop on a road with a continuous yellow edge line.



No Parking – (road rule 168)

You may drop off and pick up in this zone, it is used around schools for dropping off/picking up children, you cannot leave the vehicle and there is a **2 minute** limit.



Parking restrictions at schools are for the safety of your children.

Local Councils impose a variety of parking restrictions at and near schools to achieve a safer environment for your children. These restrictions are to optimise traffic safety and movement.

Disabled Parking

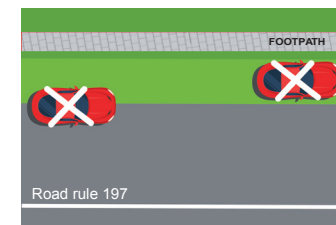
You must not stop in a parking area for people with disabilities unless;

- Your vehicle displays a current Disabled Parking Permit
- You comply with the conditions of the Permit

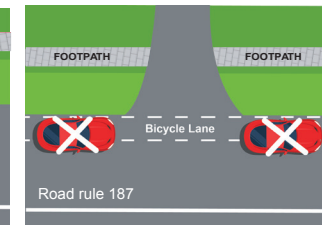


Stopping on a Path, Dividing Strip, Nature Strip, Painted Island or Traffic Island – (road rule 197 & 187)

You must not stop on a footpath, bicycle path, shared path or dividing strip, or a nature strip adjacent to a length of road in a built up area unless there is a permissive parking sign for that place.



Kerbs and Nature Strip



Bicycle Lane

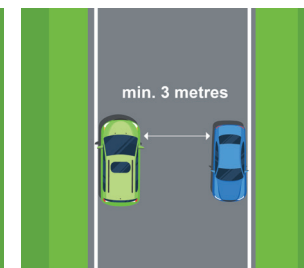
Parallel Parking – (road rule 208)

A parked vehicle must face in the direction in which vehicles lawfully drive on that road/road-related area.

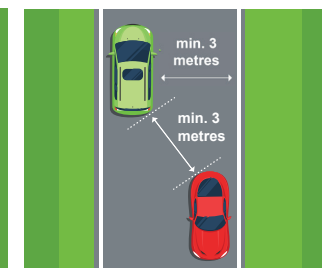
You must not stop where any part of your vehicle is between the centre of the road and a car parked at the side of the road.



Solid White Centre Line



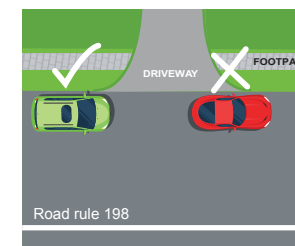
Narrow Street



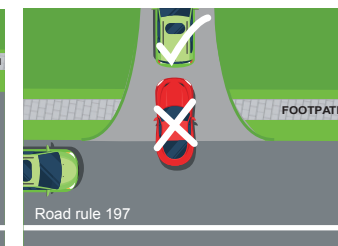
Narrow Street

Footpaths and Driveways – (road rule 198 & 197)

A vehicle must not stop over footpath or crossover. This rule applies to the general public as well as the owner of the property.



Driveway

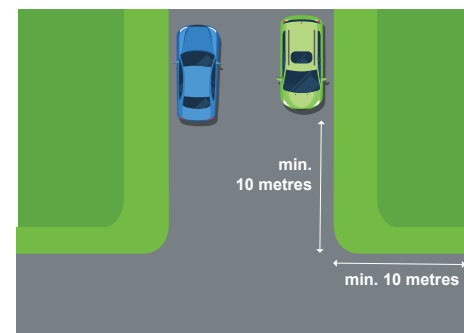


Driveway

Intersections – (road rule 170)

A vehicle must not stop or park within 10 metres of an intersection.

If the intersection has traffic signals, vehicles must not stop or park within 20 metres.



Intersection

For more information visit the Driver's handbook at mylicence.sa.gov.au

Fines apply for failure to comply with these restrictions
playford.sa.gov.au/parking