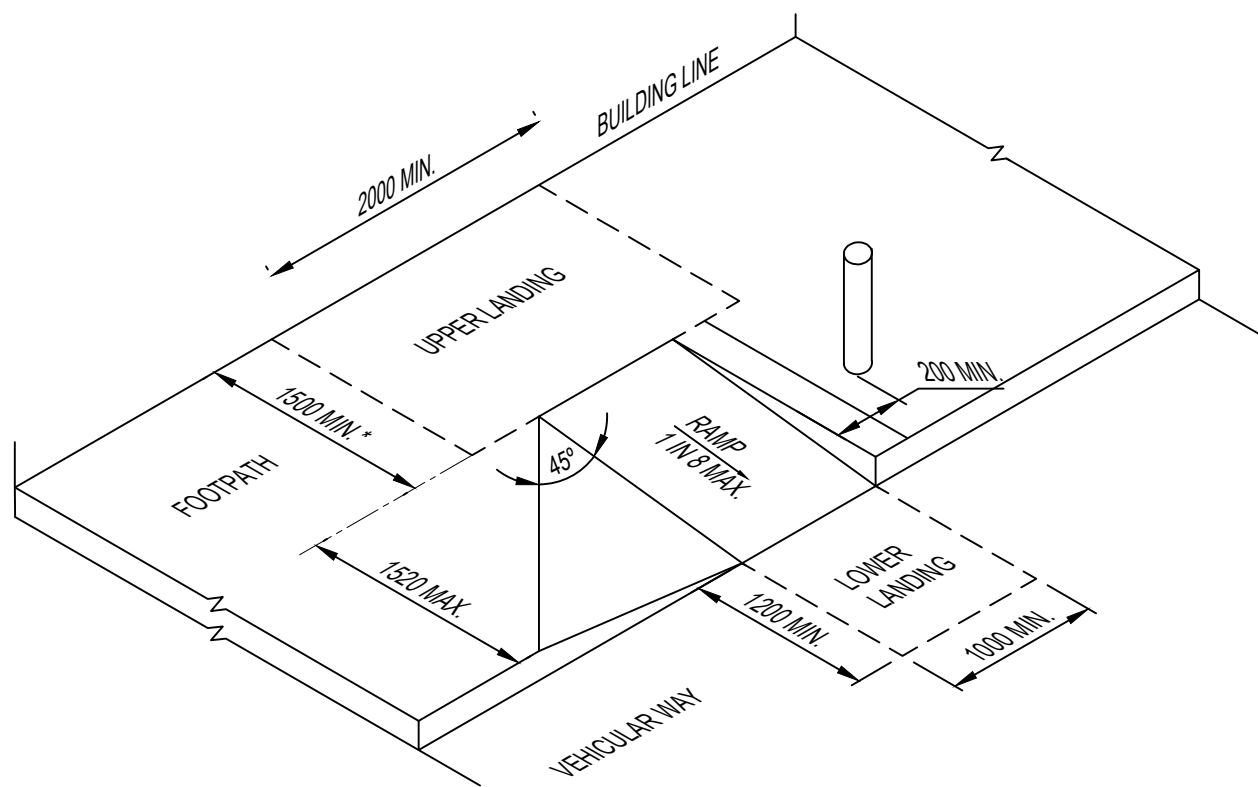
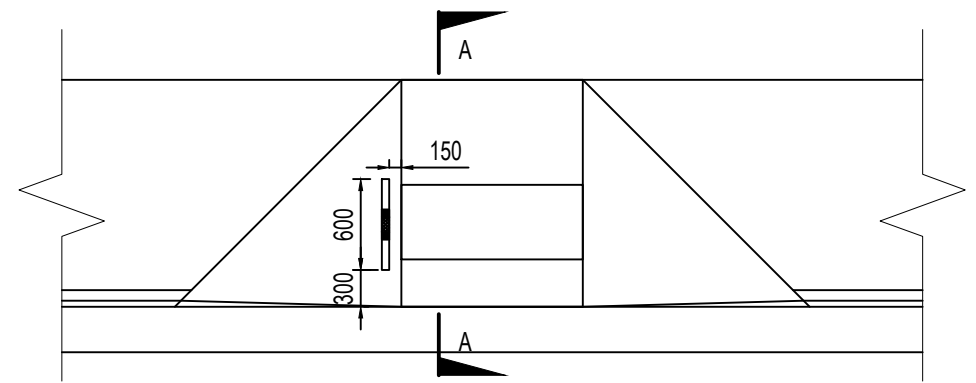


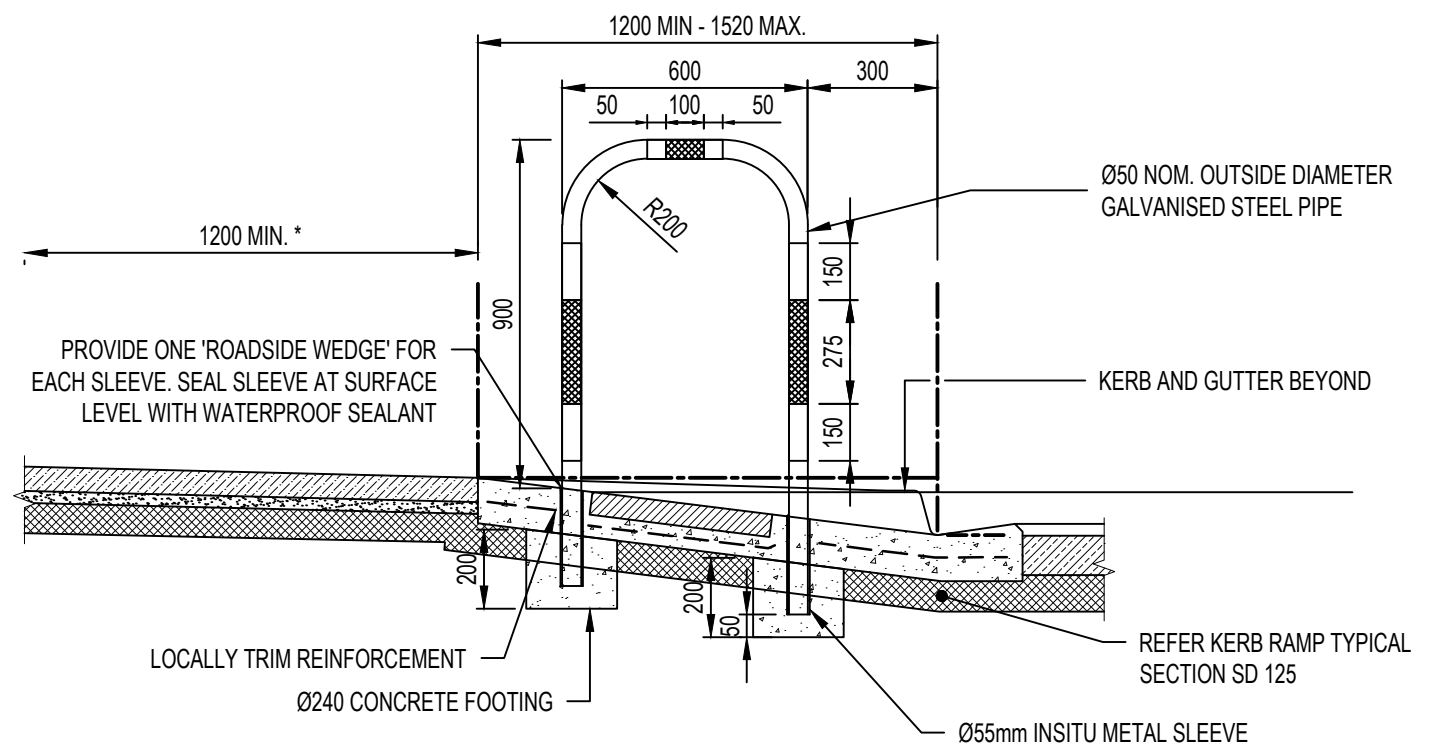
**KERB RAMP ISOMETRIC VIEW**  
 SCALE NTS  
 \* WHERE THERE IS NO TURN INVOLVED, TOP LANDING MAY BE REDUCED TO 1200mm MIN. IN LENGTH



**KERB RAMP WITH VERTICAL SIDE - ISOMETRIC VIEW**  
 SCALE NTS  
 \* WHERE THERE IS NO TURN INVOLVED, TOP LANDING MAY BE REDUCED TO 1200mm MIN. IN LENGTH



**KERB RAMP HAND RAIL DETAIL**  
 SCALE 1:50



**SECTION A - A**  
 SCALE 1:20

**NOTE:**  
 1. REFER SD 125 FOR DETAILS

ALL MEASUREMENTS IN MILLIMETRES

REV	DESCRIPTION	DATE	DES	DRW	APP
C	MINOR AMENDMENTS	18.07.2017	JZ	JC	DSL
B	ISSUED FOR REVIEW	10.05.2016	JZ	DL	DSL
A	ISSUED FOR REVIEW	15.03.2016	JZ	DL	DSL

THIS PROJECT HAS BEEN ASSISTED BY THE LOCAL GOVERNMENT RESEARCH AND DEVELOPMENT SCHEME AND INSTITUTE OF PUBLIC WORKS ENGINEERING AUSTRALASIA

INFRASTRUCTURE GUIDELINES (SA)

SHEET TITLE  
**KERB RAMP SPECIFICATIONS**  
**SHEET 2 OF 2**

SCALE  
 NTS @ A3

DRAWING No. **SD 130** REV **C**