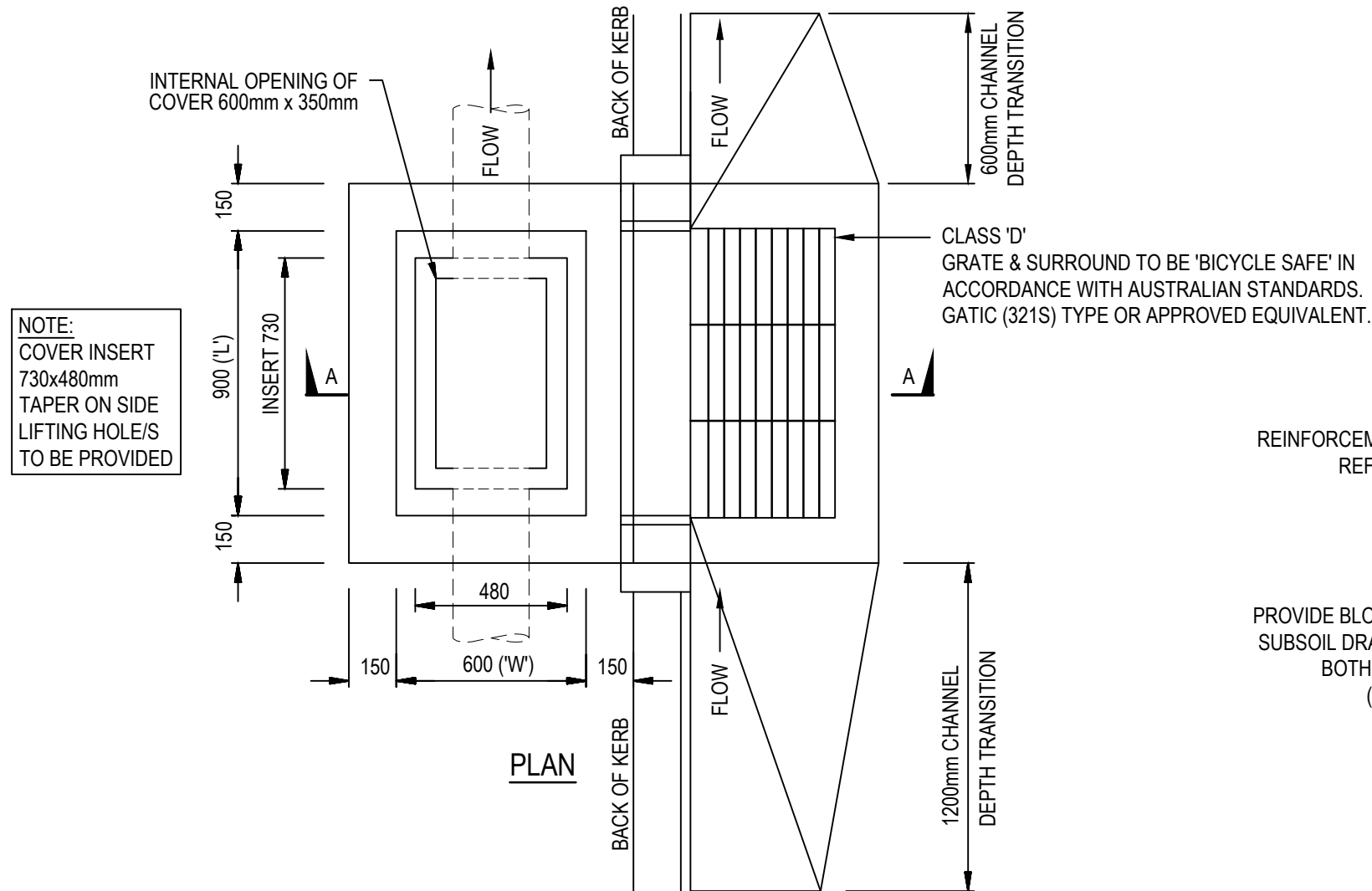
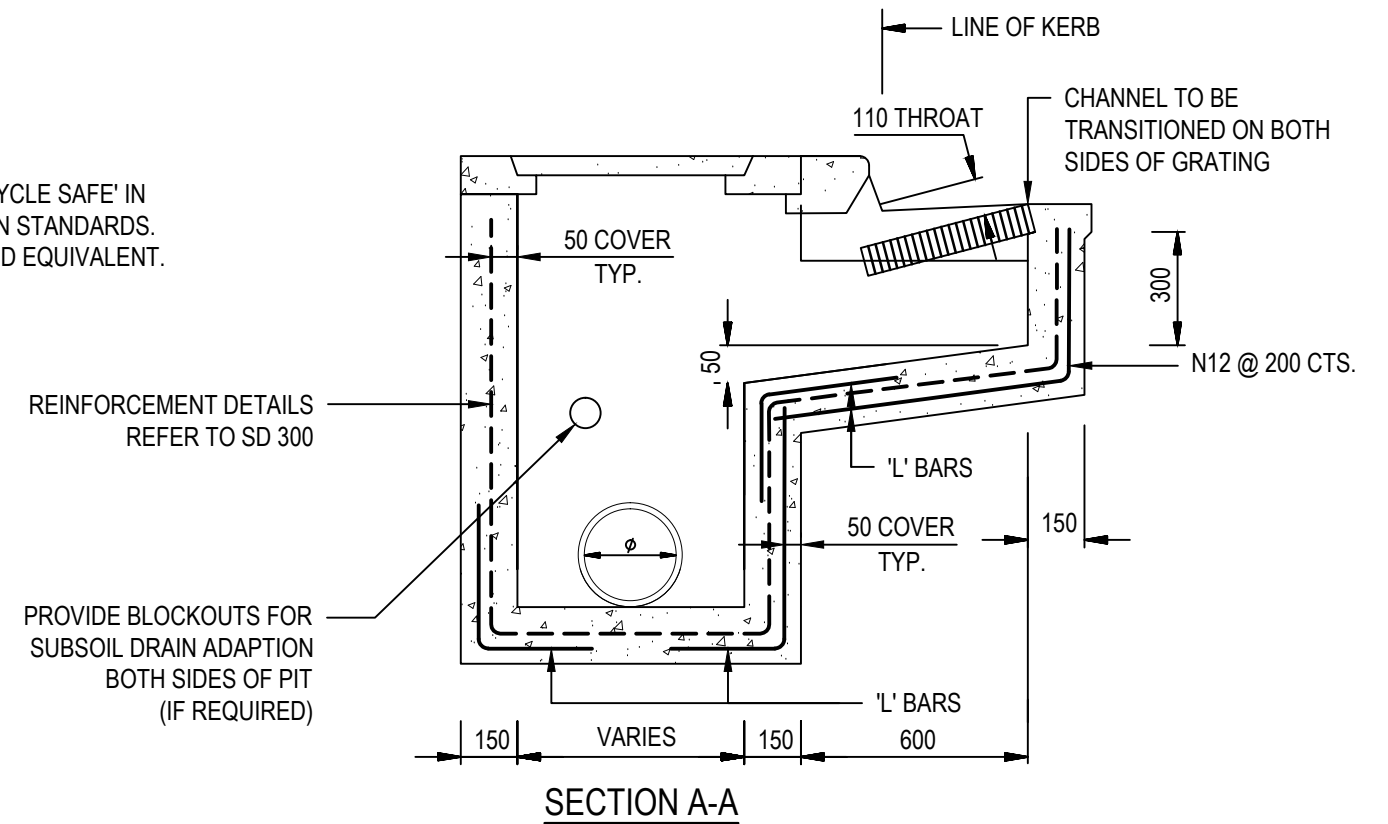


NOTE:

1. CLASS D LOAD RATING REQUIRED FOR GRATE. COVERS TO BE CLASS B OR HIGHER IF LIKELY TO BE DRIVEN OVER
2. PRECAST LINTEL AND GRATES APPROVED BY COUNCIL TO BE INSTALLED BY MANUFACTURERS RECOMMENDATIONS.
3. CHANNEL DEPTH TRANSITION TO BE INCREASED TO 1200mm ON BOTH SIDES AT LOW POINT (SAG) LOCATIONS



NOTE:
COVER INSERT
730x480mm
TAPER ON SIDE
LIFTING HOLE/S
TO BE PROVIDED



ALL MEASUREMENTS IN MILLIMETRES

REV	DESCRIPTION	DATE	DES	DRW	APP
D	MINOR AMENDMENTS	06.11.2018	AF	AF	MDH
C	MINOR AMENDMENTS	18.07.2017	JZ	JC	DSL
B	ISSUED FOR REVIEW	10.05.2016	JZ	DL	DSL
A	ISSUED FOR REVIEW	15.03.2016	RJF	DL	DSL

THIS PROJECT HAS BEEN ASSISTED BY THE LOCAL GOVERNMENT RESEARCH AND DEVELOPMENT SCHEME AND INSTITUTE OF PUBLIC WORKS ENGINEERING AUSTRALASIA

INFRASTRUCTURE GUIDELINES (SA)

SHEET TITLE
**OFFSET SIDE ENTRY PIT
WITH 900mm INLET GRATE**

SCALE
NTS @ A3

DRAWING No. **SD 340**

REV **D**