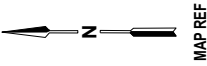


Legend

- Work Area
- Cone



Site Contact: Edwin Salatiel
Phone No: 0417 723 964
Works commence: 09/04/19
Completed by: 10/04/19
Onsite: 8:00am

Traffic Controllers will be onsite to assist motorists and pedestrians when required.
 Pedestrian signage will be used whenever the worksite extends to footpaths

ISSUE	DESG	APPD	DATE	AMMENDMENT DESCRIPTION

CLIENT:
BMD Constructions

NOTES:

- THIS TRAFFIC GUIDANCE SCHEME WAS DEVELOPED BY COMPETENT AND EXPERIENCED PERSONS AND IN ACCORDANCE WITH THE REQUIREMENTS OUTLINED IN AUSTRALIAN STANDARD - AS1742.3 AND THE ROAD MANAGEMENT ACT 2004. BEFORE THE COMMENCEMENT OF ROUTINE SERVICES OR ANY ORDERED WORKS, ALTUS WILL CARRY OUT A RISK ASSESSMENT AND DEVELOP CONTROLS, MEASURES AND PLANS TO IDENTIFY, ELIMINATE OR MITIGATE ANY HAZARDS.
- THIS PLAN WAS DEVELOPED TO ALLOW FOR THE SAFE MOVEMENT OF VEHICULAR AND PEDESTRIAN TRAFFIC AROUND THE WORKSITE, THE PROTECTION OF WORKERS FROM PASSING TRAFFIC, THE PROVISION FOR ACCESS TO PROPERTIES LOCATED WITHIN THE LIMITS OF THE WORKSITE, THE IMPLEMENTATION, MAINTENANCE AND REMOVAL OF ANY NECESSARY TEMPORARY ROADWAYS AND DETOURS, THE PROVISION OF TRAFFIC CONTROLLERS, THE INSTALLATION OF TEMPORARY SIGNS, TEMPORARY ROAD DELINEATION, AND ANY OTHER SAFETY MEASURES OR CONTROLS SUCH AS SAFETY BARRIERS WHEN REQUIRED.
- ALTUS TRAFFIC DOES NOT ACCEPT RESPONSIBILITY FOR COMPLIANCE OF THIS PLAN WHEN IMPLEMENTED OR MONITORED BY EXTERNAL PARTIES.
- ON REQUEST ALTUS TRAFFIC WILL PROVIDE PEOPLE, MATERIALS, RESOURCES AND SYSTEMS TO PROPERLY PERFORM THE SERVICES RELATED TO THE IMPLEMENTATION OF THE TRAFFIC MANAGEMENT PLAN.
- ALTUS TRAFFIC CONTROLLERS WILL WEAR HIGH-VISIBILITY OUTER GARMENTS AND THE APPROPRIATE PERSONAL PROTECTIVE EQUIPMENT COMPLYING AUSTRALIAN OH&S STANDARDS. ALL VEHICLES USED IN TRAFFIC CONTROL OPERATIONS WILL BE EQUIPPED WITH THE APPROPRIATE VEHICLE MOUNTED WARNING DEVICES, FIRST AID KITS AND FIRE EXTINGUISHERS.
- THIS PLAN IS NOT TO SCALE AND IS A REPRESENTATION ONLY AFTER A JOB SAFETY ANALYSIS IS COMPLETED ON SITE CHANGES MAY BE MADE BY ACCREDITED PERSONS. ALL AMMENDMENTS WILL BE OUTLINED AND RECORDED IN A WORKSITE DIARY.

SCALE:
NOT TO SCALE

DESIGNED: **Kos Kosgallana** DATE: 21-03-2019

APPROVED: **Kos Kosgallana**

DRAWING NUMBER:
TGS-0003

SHEET NO:
 1 of 4

ISSUE:
 0

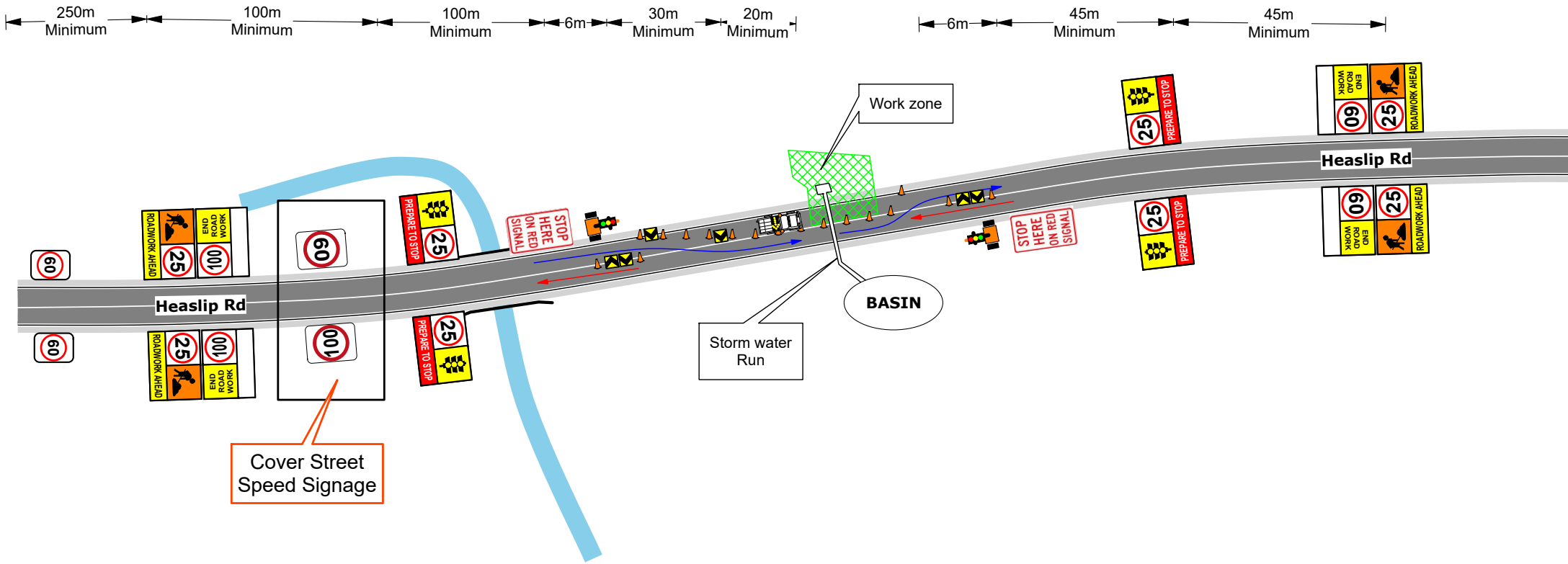
PROJECT:
 Heaslip Road
 Heaslip Rd, Angle Vale SA
 City of Playford

TITLE:
 Traffic Guidance Scheme
 Road Works
 Lane Closure
 Speed Restriction

STATUS:
PRELIMINARY CONCEPT

Call Altus Traffic
 Toll Free (Australia)
 1300 TRAFFIC (872 334)
 ABN 64 102 768 061

DATE: 21-03-2019
 PROJECT: BMD Constructions
 DRAWING: TGS-0003



Legend

- Work Area
- Cone

Works on South Bound

Site Contact: Edwin Salatiel
Phone No: 0417 723 964
Works commence: 10/04/19
Completed by: 11/04/19
Onsite: 8:00am

Traffic Controllers will be onsite to assist motorists and pedestrians when required.
 Pedestrian signage will be used whenever the worksite extends to footpaths

ISSUE	DESG	APPD	DATE	AMMENDMENT DESCRIPTION

CLIENT:
BMD Constructions

NOTES:

- THIS TRAFFIC GUIDANCE SCHEME WAS DEVELOPED BY COMPETENT AND EXPERIENCED PERSONS AND IN ACCORDANCE WITH THE REQUIREMENTS OUTLINED IN AUSTRALIAN STANDARD - AS1742.3 AND THE ROAD MANAGEMENT ACT 2004. BEFORE THE COMMENCEMENT OF ROUTINE SERVICES OR ANY ORDERED WORKS, ALTUS WILL CARRY OUT A RISK ASSESSMENT AND DEVELOP CONTROLS, MEASURES AND PLANS TO IDENTIFY, ELIMINATE OR MITIGATE ANY HAZARDS.
- THIS PLAN WAS DEVELOPED TO ALLOW FOR THE SAFE MOVEMENT OF VEHICULAR AND PEDESTRIAN TRAFFIC AROUND THE WORKSITE, THE PROTECTION OF WORKERS FROM PASSING TRAFFIC, THE PROVISION FOR ACCESS TO PROPERTIES LOCATED WITHIN THE LIMITS OF THE WORKSITE, THE IMPLEMENTATION, MAINTENANCE AND REMOVAL OF ANY NECESSARY TEMPORARY ROADWAYS AND DETOURS, THE PROVISION OF TRAFFIC CONTROLLERS, THE INSTALLATION OF TEMPORARY SIGNS, TEMPORARY ROAD DELINEATION, AND ANY OTHER SAFETY MEASURES OR CONTROLS SUCH AS SAFETY BARRIERS WHEN REQUIRED.
- ALTUS TRAFFIC DOES NOT ACCEPT RESPONSIBILITY FOR COMPLIANCE OF THIS PLAN WHEN IMPLEMENTED OR MONITORED BY EXTERNAL PARTIES.
- ON REQUEST ALTUS TRAFFIC WILL PROVIDE PEOPLE, MATERIALS, RESOURCES AND SYSTEMS TO PROPERLY PERFORM THE SERVICES RELATED TO THE IMPLEMENTATION OF THE TRAFFIC MANAGEMENT PLAN.
- ALTUS TRAFFIC CONTROLLERS WILL WEAR HIGH-VISIBILITY OUTER GARMENTS AND THE APPROPRIATE PERSONAL PROTECTIVE EQUIPMENT COMPLYING AUSTRALIAN OH&S STANDARDS. ALL VEHICLES USED IN TRAFFIC CONTROL OPERATIONS WILL BE EQUIPPED WITH THE APPROPRIATE VEHICLE MOUNTED WARNING DEVICES, FIRST AID KITS AND FIRE EXTINGUISHERS.
- THIS PLAN IS NOT TO SCALE AND IS A REPRESENTATION ONLY AFTER A JOB SAFETY ANALYSIS IS COMPLETED ON SITE CHANGES MAY BE MADE BY ACCREDITED PERSONS. ALL AMENDMENTS WILL BE OUTLINED AND RECORDED IN A WORKSITE DIARY.

SCALE:
NOT TO SCALE

DESIGNED: **Kos Kosgallana** DATE: **21-03-2019**

APPROVED: **Kos Kosgallana**

DRAWING NUMBER:
TGS-0003

SHEET NO:
2 of 4

ISSUE:
0

PROJECT:
 South Bound Works
 Heaslip Rd, Angle Vale SA
 City of Playford

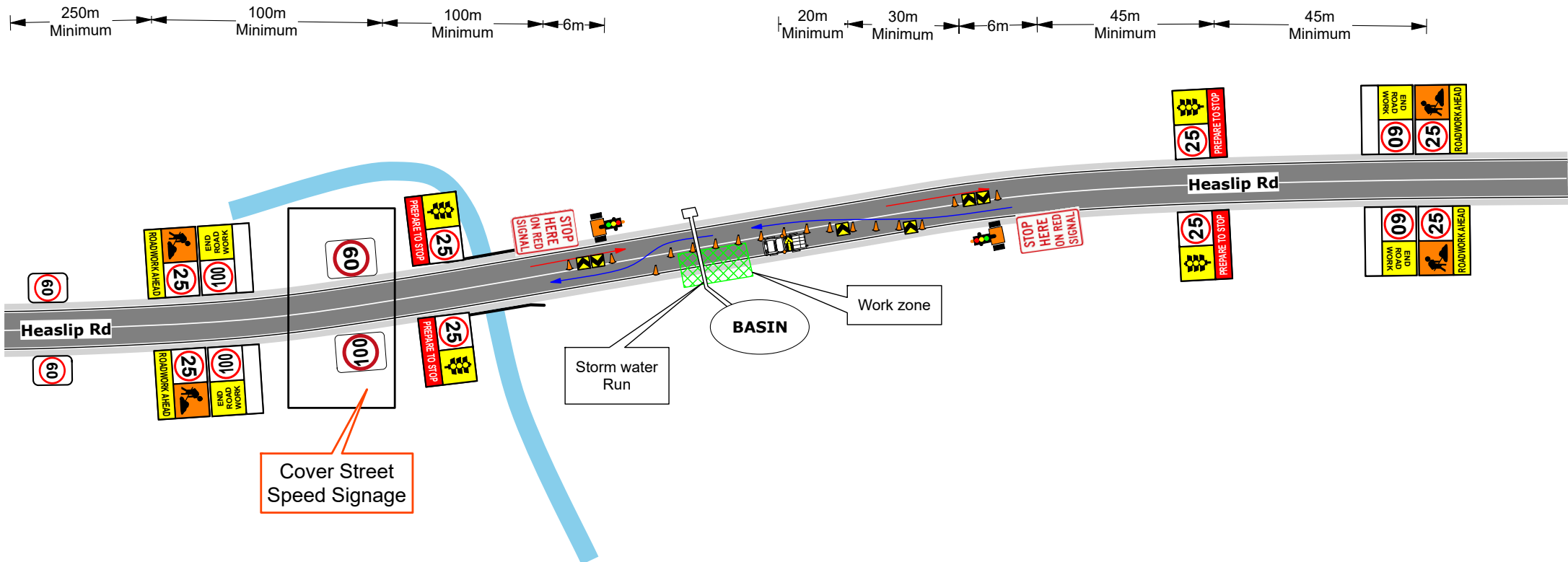
TITLE:
 Traffic Guidance Scheme
 Road Works
 Lane Closure
 Speed Restriction

STATUS:
PRELIMINARY CONCEPT

Call Altus Traffic
 Toll Free (Australia)
 1300 TRAFFIC (872 334)
 ABN 64 102 768 061

DATE: 21/03/2019
 DRAWN BY: [Name]
 CHECKED BY: [Name]
 APPROVED BY: [Name]

MAP REF



Legend

- Work Area
- Cone

Works on North Bound

Site Contact: Edwin Salatiel
Phone No: 0417 723 964
Works commence: 12/04/19
Completed by: 13/04/19
Onsite: 8:00am

Traffic Controllers will be onsite to assist motorists and pedestrians when required.
 Pedestrian signage will be used whenever the worksite extends to footpaths

ISSUE	DESG	APPD	DATE	AMMENDMENT DESCRIPTION

CLIENT:
BMD Constructions

NOTES:
 - THIS TRAFFIC GUIDANCE SCHEME WAS DEVELOPED BY COMPETENT AND EXPERIENCED PERSONS AND IN ACCORDANCE WITH THE REQUIREMENTS OUTLINED IN AUSTRALIAN STANDARD - AS1742.3 AND THE ROAD MANAGEMENT ACT 2004. BEFORE THE COMMENCEMENT OF ROUTINE SERVICES OR ANY ORDERED WORKS, ALTUS WILL CARRY OUT A RISK ASSESSMENT AND DEVELOP CONTROLS, MEASURES AND PLANS TO IDENTIFY, ELIMINATE OR MITIGATE ANY HAZARDS.
 - THIS PLAN WAS DEVELOPED TO ALLOW FOR THE SAFE MOVEMENT OF VEHICULAR AND PEDESTRIAN TRAFFIC AROUND THE WORKSITE, THE PROTECTION OF WORKERS FROM PASSING TRAFFIC, THE PROVISION FOR ACCESS TO PROPERTIES LOCATED WITHIN THE LIMITS OF THE WORKSITE, THE IMPLEMENTATION, MAINTENANCE AND REMOVAL OF ANY NECESSARY TEMPORARY ROADWAYS AND DETOURS, THE PROVISION OF TRAFFIC CONTROLLERS, THE INSTALLATION OF TEMPORARY SIGNS, TEMPORARY ROAD DELINEATION, AND ANY OTHER SAFETY MEASURES OR CONTROLS SUCH AS SAFETY BARRIERS WHEN REQUIRED.
 - ALTUS TRAFFIC DOES NOT ACCEPT RESPONSIBILITY FOR COMPLIANCE OF THIS PLAN WHEN IMPLEMENTED OR MONITORED BY EXTERNAL PARTIES.
 - ON REQUEST ALTUS TRAFFIC WILL PROVIDE PEOPLE, MATERIALS, RESOURCES AND SYSTEMS TO PROPERLY PERFORM THE SERVICES RELATED TO THE IMPLEMENTATION OF THE TRAFFIC MANAGEMENT PLAN.
 - ALTUS TRAFFIC CONTROLLERS WILL WEAR HIGH-VISIBILITY OUTER GARMENTS AND THE APPROPRIATE PERSONAL PROTECTIVE EQUIPMENT COMPLYING AUSTRALIAN OH&S STANDARDS. ALL VEHICLES USED IN TRAFFIC CONTROL OPERATIONS WILL BE EQUIPPED WITH THE APPROPRIATE VEHICLE MOUNTED WARNING DEVICES, FIRST AID KITS AND FIRE EXTINGUISHERS.
 - THIS PLAN IS NOT TO SCALE AND IS A REPRESENTATION ONLY AFTER A JOB SAFETY ANALYSIS IS COMPLETED ON SITE CHANGES MAY BE MADE BY ACCREDITED PERSONS. ALL AMENDMENTS WILL BE OUTLINED AND RECORDED IN A WORKSITE DIARY.

SCALE:
NOT TO SCALE

DESIGNED: Kos Kosgallana DATE: 21-03-2019
 APPROVED: Kos Kosgallana
 DRAWING NUMBER: TGS-0003
 SHEET NO: 3 of 4

PROJECT:
 North Bound Works
 Heaslip Rd, Angle Vale SA
 City of Playford

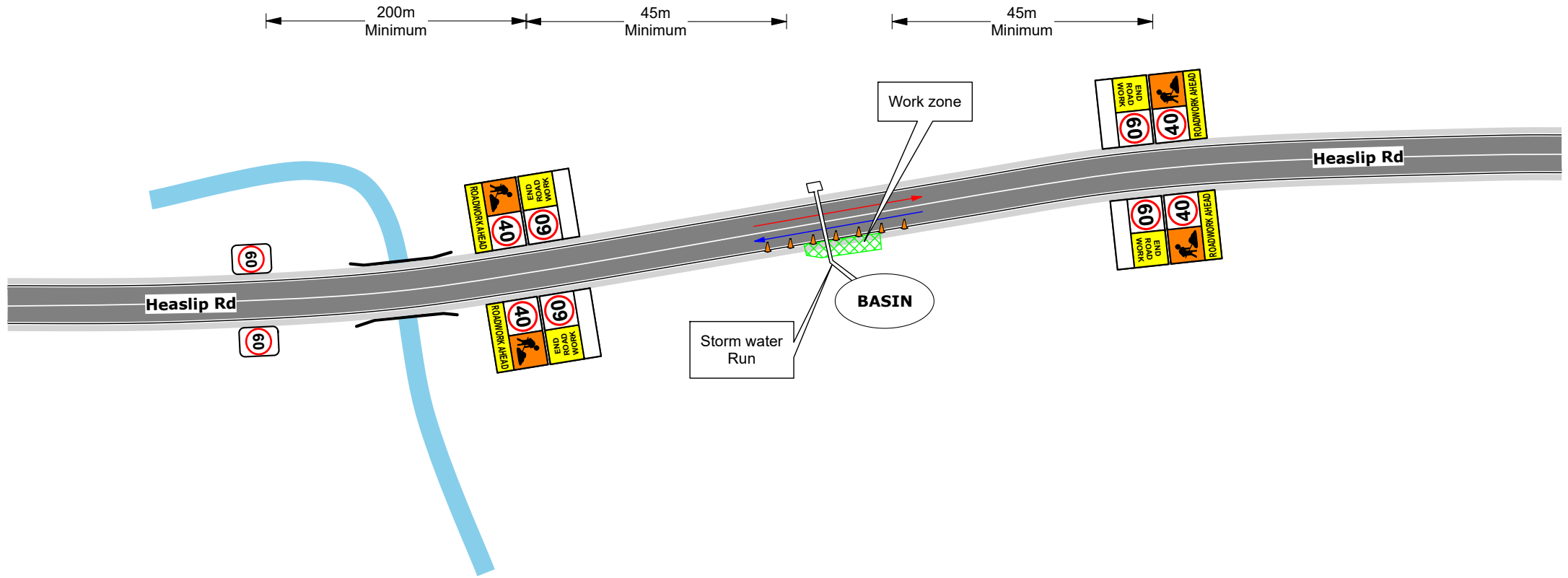
TITLE:
 Traffic Guidance Scheme
 Road Works
 Lane Closure
 Speed Restriction

STATUS:
PRELIMINARY CONCEPT

Call Altus Traffic
 Toll Free (Australia)
 1300 TRAFFIC (872 334)
 ABN 64 102 768 061

MAP REF

DATE: 21-03-2019
 DRAWN BY: [Name]
 CHECKED BY: [Name]
 APPROVED BY: [Name]



Legend

- Work Area
- Cone

Site Contact: Edwin Salatiel
Phone No: 0417 723 964
Works commence: 15/04/19
Completed by: 15/04/19
Onsite: 8:00am

Traffic Controllers will be onsite to assist motorists and pedestrians when required.
 Pedestrian signage will be used whenever the worksite extends to footpaths

ISSUE	DESG	APPD	DATE	AMMENDMENT DESCRIPTION

CLIENT:
BMD Constructions

NOTES:

- THIS TRAFFIC GUIDANCE SCHEME WAS DEVELOPED BY COMPETENT AND EXPERIENCED PERSONS AND IN ACCORDANCE WITH THE REQUIREMENTS OUTLINED IN AUSTRALIAN STANDARD - AS1742.3 AND THE ROAD MANAGEMENT ACT 2004. BEFORE THE COMMENCEMENT OF ROUTINE SERVICES OR ANY ORDERED WORKS, ALTUS WILL CARRY OUT A RISK ASSESSMENT AND DEVELOP CONTROLS, MEASURES AND PLANS TO IDENTIFY, ELIMINATE OR MITIGATE ANY HAZARDS.
- THIS PLAN WAS DEVELOPED TO ALLOW FOR THE SAFE MOVEMENT OF VEHICULAR AND PEDESTRIAN TRAFFIC AROUND THE WORKSITE, THE PROTECTION OF WORKERS FROM PASSING TRAFFIC, THE PROVISION FOR ACCESS TO PROPERTIES LOCATED WITHIN THE LIMITS OF THE WORKSITE, THE IMPLEMENTATION, MAINTENANCE AND REMOVAL OF ANY NECESSARY TEMPORARY ROADWAYS AND DETOURS, THE PROVISION OF TRAFFIC CONTROLLERS, THE INSTALLATION OF TEMPORARY SIGNS, TEMPORARY ROAD DELINEATION, AND ANY OTHER SAFETY MEASURES OR CONTROLS SUCH AS SAFETY BARRIERS WHEN REQUIRED.
- ALTUS TRAFFIC DOES NOT ACCEPT RESPONSIBILITY FOR COMPLIANCE OF THIS PLAN WHEN IMPLEMENTED OR MONITORED BY EXTERNAL PARTIES.
- ON REQUEST ALTUS TRAFFIC WILL PROVIDE PEOPLE, MATERIALS, RESOURCES AND SYSTEMS TO PROPERLY PERFORM THE SERVICES RELATED TO THE IMPLEMENTATION OF THE TRAFFIC MANAGEMENT PLAN.
- ALTUS TRAFFIC CONTROLLERS WILL WEAR HIGH-VISIBILITY OUTER GARMENTS AND THE APPROPRIATE PERSONAL PROTECTIVE EQUIPMENT COMPLYING AUSTRALIAN OH&S STANDARDS. ALL VEHICLES USED IN TRAFFIC CONTROL OPERATIONS WILL BE EQUIPPED WITH THE APPROPRIATE VEHICLE MOUNTED WARNING DEVICES, FIRST AID KITS AND FIRE EXTINGUISHERS.
- THIS PLAN IS NOT TO SCALE AND IS A REPRESENTATION ONLY AFTER A JOB SAFETY ANALYSIS IS COMPLETED ON SITE CHANGES MAY BE MADE BY ACCREDITED PERSONS. ALL AMMENDMENTS WILL BE OUTLINED AND RECORDED IN A WORKSITE DIARY.

SCALE:
NOT TO SCALE

DESIGNED: **Kos Kosgallana** DATE: 21-03-2019

APPROVED: **Kos Kosgallana**

DRAWING NUMBER:
TGS-0003

SHEET NO:
4 of 4

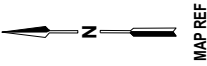
ISSUE:
0

PROJECT:
 Heaslip Road
 Heaslip Rd, Angle Vale SA
 City of Playford

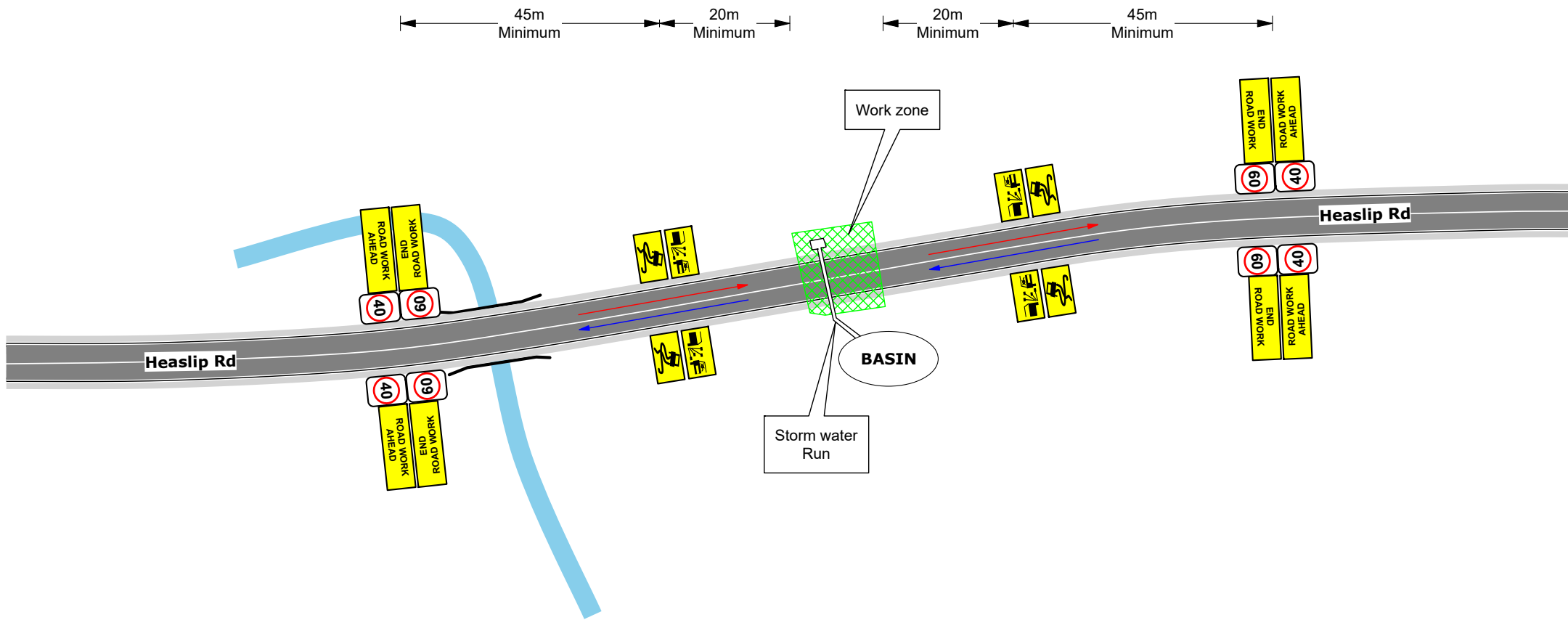
TITLE:
 Traffic Guidance Scheme
 Road Works
 Lane Closure
 Speed Restriction

STATUS:
PRELIMINARY CONCEPT

Call Altus Traffic
 Toll Free (Australia)
 1300 TRAFFIC (872 334)
 ABN 64 102 768 061



DATE: 21-03-2019
 PROJECT: BMD
 DRAWING: TGS-0003
 SCALE: NOT TO SCALE



Legend

Work Area

Site Contact: Edwin Salatiel
Phone No: 0417 723 964
Works commence: 15/04/19
Completed by: 15/04/19
Onsite: 8:00am

Traffic Controllers will be onsite to assist motorists and pedestrians when required.

Pedestrian signage will be used whenever the worksite extends to footpaths

AFTERCARE

ISSUE	DESG	APPD	DATE	AMMENDMENT DESCRIPTION

CLIENT:
BMD Constructions

NOTES:

- THIS TRAFFIC GUIDANCE SCHEME WAS DEVELOPED BY COMPETENT AND EXPERIENCED PERSONS AND IN ACCORDANCE WITH THE REQUIREMENTS OUTLINED IN AUSTRALIAN STANDARD - AS1742.3 AND THE ROAD MANAGEMENT ACT 2004. BEFORE THE COMMENCEMENT OF ROUTINE SERVICES OR ANY ORDERED WORKS, ALTUS WILL CARRY OUT A RISK ASSESSMENT AND DEVELOP CONTROLS, MEASURES AND PLANS TO IDENTIFY, ELIMINATE OR MITIGATE ANY HAZARDS.
- THIS PLAN WAS DEVELOPED TO ALLOW FOR THE SAFE MOVEMENT OF VEHICULAR AND PEDESTRIAN TRAFFIC AROUND THE WORKSITE, THE PROTECTION OF WORKERS FROM PASSING TRAFFIC, THE PROVISION FOR ACCESS TO PROPERTIES LOCATED WITHIN THE LIMITS OF THE WORKSITE, THE IMPLEMENTATION, MAINTENANCE AND REMOVAL OF ANY NECESSARY TEMPORARY ROADWAYS AND DETOURS, THE PROVISION OF TRAFFIC CONTROLLERS, THE INSTALLATION OF TEMPORARY SIGNS, TEMPORARY ROAD DELINEATION, AND ANY OTHER SAFETY MEASURES OR CONTROLS SUCH AS SAFETY BARRIERS WHEN REQUIRED.
- ALTUS TRAFFIC DOES NOT ACCEPT RESPONSIBILITY FOR COMPLIANCE OF THIS PLAN WHEN IMPLEMENTED OR MONITORED BY EXTERNAL PARTIES.
- ON REQUEST ALTUS TRAFFIC WILL PROVIDE PEOPLE, MATERIALS, RESOURCES AND SYSTEMS TO PROPERLY PERFORM THE SERVICES RELATED TO THE IMPLEMENTATION OF THE TRAFFIC MANAGEMENT PLAN.
- ALTUS TRAFFIC CONTROLLERS WILL WEAR HIGH-VISIBILITY OUTER GARMENTS AND THE APPROPRIATE PERSONAL PROTECTIVE EQUIPMENT COMPLYING AUSTRALIAN OH&S STANDARDS. ALL VEHICLES USED IN TRAFFIC CONTROL OPERATIONS WILL BE EQUIPPED WITH THE APPROPRIATE VEHICLE MOUNTED WARNING DEVICES, FIRST AID KITS AND FIRE EXTINGUISHERS.
- THIS PLAN IS NOT TO SCALE AND IS A REPRESENTATION ONLY AFTER A JOB SAFETY ANALYSIS IS COMPLETED ON SITE CHANGES MAY BE MADE BY ACCREDITED PERSONS. ALL AMMENDMENTS WILL BE OUTLINED AND RECORDED IN A WORKSITE DIARY.

SCALE:
NOT TO SCALE

DESIGNED: **Kos Kosgallana** DATE: **21-03-2019**

APPROVED: **Kos Kosgallana**

DRAWING NUMBER:
TGS-0003

SHEET NO: _____ ISSUE: **0**

PROJECT:
AFTERCARE
 Heaslip Rd, Angle Vale SA
 City of Playford

TITLE:
Traffic Guidance Scheme
 Road Works
 Lane Closure
 Speed Restriction

STATUS:
PRELIMINARY CONCEPT

Call Altus Traffic
 Toll Free (Australia)
 1300 TRAFFIC (872 334)
 ABN 64 102 768 061

DATE: 21/03/2019
 PROJECT: B.V.
 DRAWING: 0003
 FILE: Altus_Aftercare_S4_21_03_2019_8:00AM

MAP REF