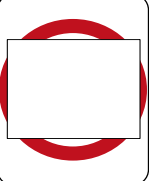





RESIDENTS & BUSINESSES TO BE NOTIFIED BY LETTER PRIOR TO SCHEDULED WORKS


Any Conflicting Speed Signs MUST be covered - this includes Advisory Speed Signs. If you are unable to cover a speed sign then work may not commence until it is covered - Contact the Office for further instructions & guidance

TWO WAY - TWO LANE ROADS					
Length of zone (m)	** - For 70-110km/h roads, D = speed of approaching traffic				
Road Speed (km/h)	40	50	60	70	80-110
Buffer Zone (m)	n/a	n/a	n/a	n/a	300m +/-50m
Advance Warning (m)	D = 5	D = 15	D = 45	D** = 70	D**
Taper Area (m)	15	15	30	n/a	n/a
Safety Buffer (m)	Optional	Optional	20 - 30	20 - 30	20 - 30
Termination area (m)	Optional, 5	Optional, 5	Optional, 15	Optional, 15	Optional, 15

MULTI LANE ROADS					
Length of zone (m)	** - For 70-110km/h roads, D = speed of approaching traffic.				
Road Speed (km/h)	40	50	60	70	80-110
Buffer Zone (m)	n/a	n/a	n/a	n/a	300m +/-50m
Advance Warning (m)	D = 5	D = 15	D = 45	D** = 70	See notes
Taper Area (m)	15	30	60	See notes	See notes
Safety Buffer (m)	Optional	Optional	20 - 30	20 - 30	20 - 30
Termination area (m)	Optional, 5	Optional, 5	Optional, 15	Optional, 15	Optional, 15

Refer to field guide for more details and for AW and TA distances for roads over 70km/h as overall measurements for tapers may vary.

MTM
Makesafe Traffic Management (SA)
 225 South Terrace Wingfield SA 5013
 mtmsa.com.au
08-8262-8001

LEGEND

- TRAFFIC CONTROLLER**
- PEDESTRIAN ROUTE**
- DDA Compliant Pedestrian Ramp**
- LMS**
- ARROW BOARD**
- BOLLARDS**
- WORK AREA**
- SAFETY ZONE**



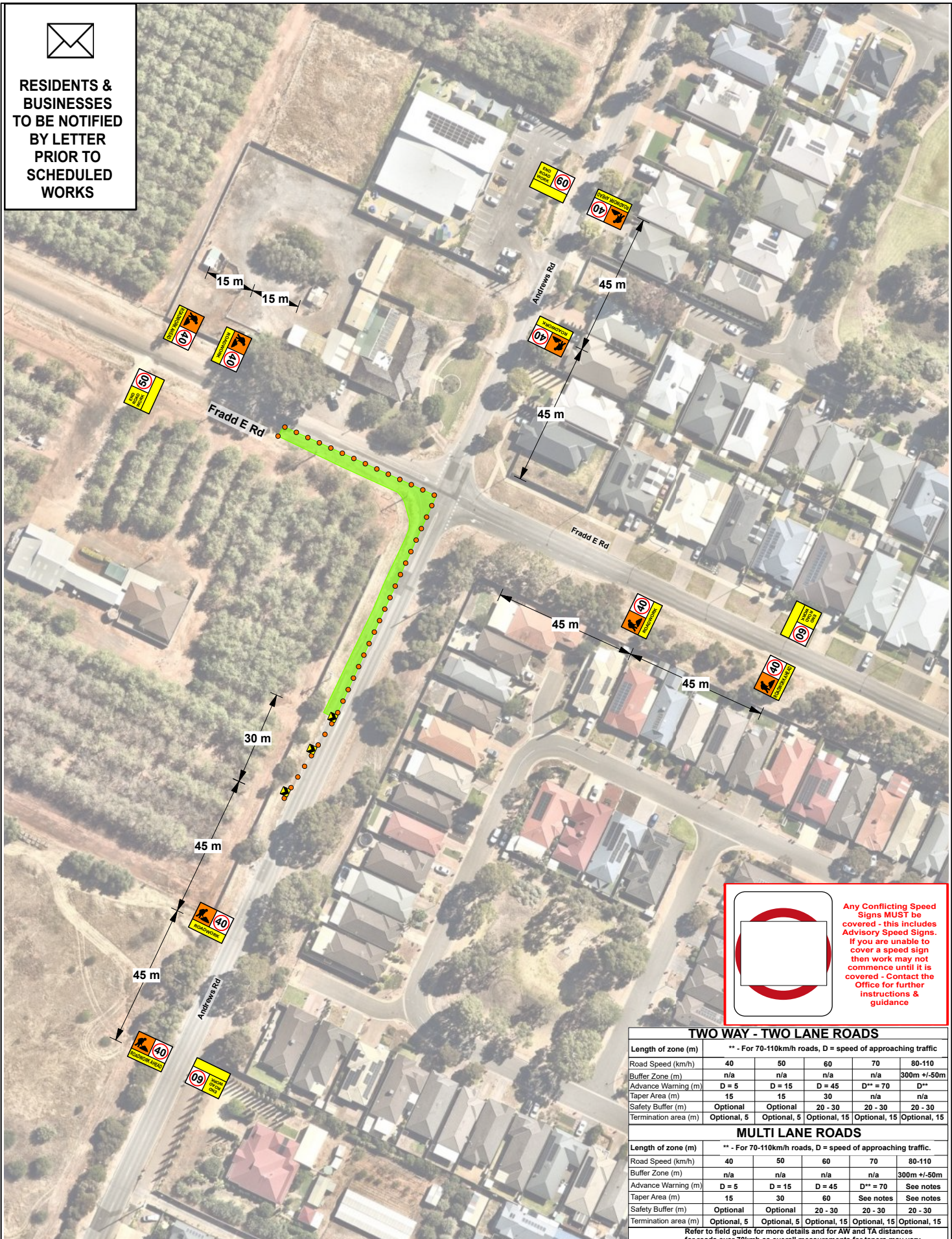
Location Fradd E Road, Munno Para West
 Municipality Playford City Council
 Client Neo Infrastructure
 Date TBC
 Time TBC
 Civil Works

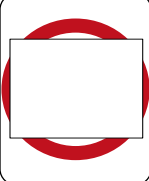
Approved Manny Mygiakis - Keyarnah S
 Client James Hatherley - 0414 385 791
 Date TBC
 Time TBC
TRAFFIC GUIDANCE SCHEME IS NOT TO SCALE AND IS INDICATIVE ONLY SIGN POSITIONS MAY NEED TO BE ADJUSTED TO SITE CONDITIONS 'MTM SA' ACCEPTS NO LIABILITY FOR IMPLEMENTATION BY OTHERS. WORKSITE TO BE FULLY COMPLIANT TO AUSTRALIAN STANDARD 1742.3.2019, AGTMM PARTS 1-10 & SA STANDARDS FOR WORKZONE TRAFFIC MANAGEMENT

Map Ref Location SA Viewer & Google Maps
 Date Drafted 12-05-2026
 Print @ A4
 Scale NTS
 TGS NAME: Fradd E Rd Munno Para West Shuttle Flow TGS 1 V2 - Neo
 Short Term Works



RESIDENTS & BUSINESSES TO BE NOTIFIED BY LETTER PRIOR TO SCHEDULED WORKS





Any Conflicting Speed Signs **MUST** be covered - this includes Advisory Speed Signs. If you are unable to cover a speed sign then work may not commence until it is covered - Contact the Office for further instructions & guidance

TWO WAY - TWO LANE ROADS					
Length of zone (m)	** - For 70-110km/h roads, D = speed of approaching traffic				
Road Speed (km/h)	40	50	60	70	80-110
Buffer Zone (m)	n/a	n/a	n/a	n/a	300m +/-50m
Advance Warning (m)	D = 5	D = 15	D = 45	D** = 70	D**
Taper Area (m)	15	15	30	n/a	n/a
Safety Buffer (m)	Optional	Optional	20 - 30	20 - 30	20 - 30
Termination area (m)	Optional, 5	Optional, 5	Optional, 15	Optional, 15	Optional, 15

MULTI LANE ROADS					
Length of zone (m)	** - For 70-110km/h roads, D = speed of approaching traffic.				
Road Speed (km/h)	40	50	60	70	80-110
Buffer Zone (m)	n/a	n/a	n/a	n/a	300m +/-50m
Advance Warning (m)	D = 5	D = 15	D = 45	D** = 70	See notes
Taper Area (m)	15	30	60	See notes	See notes
Safety Buffer (m)	Optional	Optional	20 - 30	20 - 30	20 - 30
Termination area (m)	Optional, 5	Optional, 5	Optional, 15	Optional, 15	Optional, 15

Refer to field guide for more details and for AW and TA distances for roads over 70km/h as overall measurements for tapers may vary.



Makesafe Traffic Management (SA)
225 South Terrace Wingfield SA 5013
mtmsa.com.au
08-8262-8001

LEGEND

	TMA		LMS
	PEDESTRIAN ROUTE		ARROW BOARD
	DDA Compliant Pedestrian Ramp		BOLLARDS
	WORK AREA		SAFETY ZONE

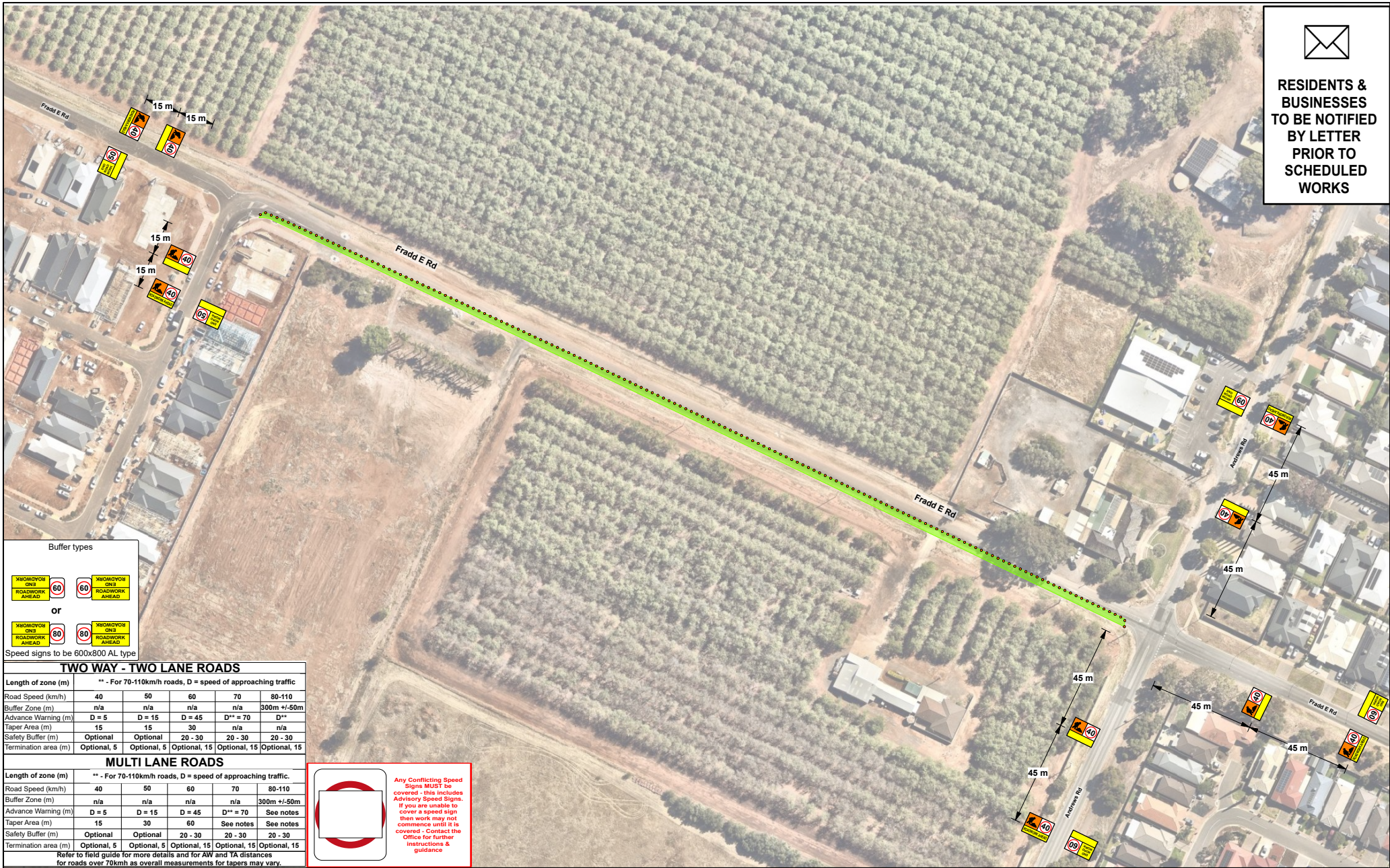
Location: Fradd E Road, Munno Para West
Municipality: Playford City Council
Client: James Hathorley - 0414 385 791
Contract: Neo Infrastructure
Date: TBC
Time: TBC
Civil Works

Approved: Manny Mygakis - Keyamah S
Map Tool: Location SA Viewer, Google Maps
Date Drafted: 12-05-2026
Scale: A4
NTS
TGS NAME: Fradd E Rd Munno Para
West Shuttle Flow TGS 2 V2 - Neo
Short Term Works

TRAFFIC GUIDANCE SCHEME IS NOT TO BE APPLIED TO INDICATIVE ONLY SIGN PORTIONS MAY NEED TO BE ADJUSTED TO SITE CONDITIONS MTM SA ACCEPTS NO LIABILITY FOR IMPLEMENTATION BY OTHERS. WORKSITE TO BE FULLY COMPLIANT TO AUSTRALIAN STANDARD 1742.3.2019. ALL TTM PARTS 1-10 & 18 STANDARDS FOR WORKZONE TRAFFIC MANAGEMENT



RESIDENTS & BUSINESSES TO BE NOTIFIED BY LETTER PRIOR TO SCHEDULED WORKS



Buffer types

Speed signs to be 600x800 AL type

TWO WAY - TWO LANE ROADS

Length of zone (m)	** - For 70-110km/h roads, D = speed of approaching traffic				
Road Speed (km/h)	40	50	60	70	80-110
Buffer Zone (m)	n/a	n/a	n/a	n/a	300m +/-50m
Advance Warning (m)	D = 5	D = 15	D = 45	D** = 70	D**
Taper Area (m)	15	15	30	n/a	n/a
Safety Buffer (m)	Optional	Optional	Optional	20 - 30	20 - 30
Termination area (m)	Optional, 5	Optional, 5	Optional, 15	Optional, 15	Optional, 15

MULTI LANE ROADS

Length of zone (m)	** - For 70-110km/h roads, D = speed of approaching traffic.				
Road Speed (km/h)	40	50	60	70	80-110
Buffer Zone (m)	n/a	n/a	n/a	n/a	300m +/-50m
Advance Warning (m)	D = 5	D = 15	D = 45	D** = 70	See notes
Taper Area (m)	15	30	60	See notes	See notes
Safety Buffer (m)	Optional	Optional	20 - 30	20 - 30	20 - 30
Termination area (m)	Optional, 5	Optional, 5	Optional, 15	Optional, 15	Optional, 15

Refer to field guide for more details and for AW and TA distances for roads over 70kmh as overall measurements for tapers may vary.

Any Conflicting Speed Signs **MUST** be covered - this includes Advisory Speed Signs. If you are unable to cover a speed sign then work may not commence until it is covered - Contact the Office for further instructions & guidance

Makesafe Traffic Management (SA)
 225 South Terrace Wingfield SA 5013
 mtmsa.com.au
08-8262-8001

LEGEND

- TMA
- TRAFFIC CONTROLLER
- PEDESTRIAN ROUTE
- DDA Compliant Pedestrian Ramp
- LMS
- ARROW BOARD
- BOLLARDS
- WORK AREA
- SAFETY ZONE



Location: Fradd E Road, Munno Para West
 Municipality: Playford City Council
 Client: Neo Infrastructure
 Date: TBC
 Time: TBC
 Civil Works

Approved: Manny Mygiakis - Keyamah S
 Client: James Hatherley - 0414 385 791

ATLAS logos: LEO, GPO, MINDS, PIR, RED, VADCO

Map Ref: Location SA Viewer & Google Maps
 Date Drafted: 12-05-2026
 Print @: A4
 Scale: NTS

TRAFFIC GUIDANCE SCHEME IS NOT TO SCALE AND IS INDICATIVE ONLY SIGN POSITIONS MAY NEED TO BE ADJUSTED TO SITE CONDITIONS *MTM SA* ACCEPTS NO LIABILITY FOR IMPLEMENTATION BY OTHERS. WORKSITE TO BE FULLY COMPLIANT TO AUSTRALIAN STANDARD 1742.3.2019, AGTTM PARTS 1-10 & SA STANDARDS FOR WORKZONE TRAFFIC MANAGEMENT

TGS NAME: Fradd E Road Munno Para West Contra Flow - Neo
 Short Term Works