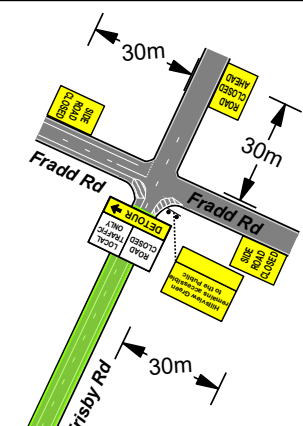


Work Location

Property NO.168 Frisby Rd will be allowed access to their property under direct traffic control from Fradd Rd

VMS Message

Upcoming Road Closure  
27 Sept - 12 Oct  
Closed 24/7



RESIDENTS & BUSINESSES TO BE NOTIFIED BY LETTER PRIOR TO SCHEDULED WORKS

Buffer types

ROADWORK AHEAD	60	ROADWORK AHEAD
END ROADWORK	60	END ROADWORK

or

ROADWORK AHEAD	80	ROADWORK AHEAD
END ROADWORK	80	END ROADWORK

Speed signs to be 600x800 AL type



Traffic Controllers will be onsite in key areas as the works progression requires. Traffic Controller locations will be determined by the works areas and the need to have Traffic Controllers onsite for assistance.



TWO WAY - TWO LANE ROADS					
Length of zone (m)	** - For 70-110km/h roads, D = speed of approaching traffic				
Road Speed (km/h)	40	50	60	70	80-110
Buffer Zone (m)	n/a	n/a	n/a	n/a	300m +/-50m
Advance Warning (m)	D = 5	D = 15	D = 45	D** = 70	D**
Taper Area (m)	15	15	30	n/a	n/a
Safety Buffer (m)	Optional	Optional	20 - 30	20 - 30	20 - 30
Termination area (m)	Optional, 5	Optional, 5	Optional, 15	Optional, 15	Optional, 15

MULTI LANE ROADS					
Length of zone (m)	** - For 70-110km/h roads, D = speed of approaching traffic.				
Road Speed (km/h)	40	50	60	70	80-110
Buffer Zone (m)	n/a	n/a	n/a	n/a	300m +/-50m
Advance Warning (m)	D = 5	D = 15	D = 45	D** = 70	See notes
Taper Area (m)	15	30	60	See notes	See notes
Safety Buffer (m)	Optional	Optional	20 - 30	20 - 30	20 - 30
Termination area (m)	Optional, 5	Optional, 5	Optional, 15	Optional, 15	Optional, 15

Refer to field guide for more details and for AW and TA distances for roads over 70kmh as overall measurements for tapers may vary.



**MTM**  
Makesafe Traffic Management (SA)  
225 South Terrace Wingfield SA 5013  
mtmsa.com.au  
08-8262-8001

**LEGEND**

- TRAFFIC CONTROLLER
- PEDESTRIAN ROUTE
- DDA Compliant Pedestrian Ramp
- LMS
- ARROW BOARD
- BOLLARDS
- WORK AREA
- SAFETY ZONE



Location  
Frisby Rd Angle Vale  
Municipality  
Playford City Council  
Client  
Diverse Civil  
Date  
27/09/2025 to 12/10/2025  
Time  
24/7  
Civil Works

Approved  
Manmy Mygiakis - Keyarnah S  
Client  
Daniel Scott - 0429 523 862  
TRAFFIC GUIDANCE SCHEME IS NOT TO SCALE AND IS INDICATIVE ONLY SIGN POSITIONS MAY NEED TO BE ADJUSTED TO SITE CONDITIONS 'MTM SA' ACCEPTS NO LIABILITY FOR IMPLEMENTATION BY OTHERS. WORKSITES TO BE FULLY COMPLIANT TO AUSTRALIAN STANDARD 1742.3.2019, AGT/MTM PARTS 1+10 & SA STANDARDS FOR WORKZONE TRAFFIC MANAGEMENT

Map Ref  
Location SA Viewer  
Google Maps  
Date Drafted  
19-05-2025  
Print @  
A4  
Scale  
NTS  
TGS NAME:  
Frisby Rd Angle Vale  
ROAD CLOSURE - Diverse Civil  
Short Term Works